



AT VALLEY KNOLLS

### PLAN 6

3 BR / 3 BA · 2561 SQ FT  
2 STORY · 3 CAR TANDEM



### HIGHLIGHTS:

- Elongated Front Entry Porch
- Den Next to Full 3rd Bath
- Expansive Kitchen Walk-in Pantry
- Upstairs Flex Loft Space
- Laundry off Master for Convenience
- Private 3rd Bedroom Next to Full Bath

### LOWER LEVEL



### UPPER LEVEL



### BASE PLAN

# PLAN 6 | ELEVATIONS & OPTIONS



URBAN



MODERN

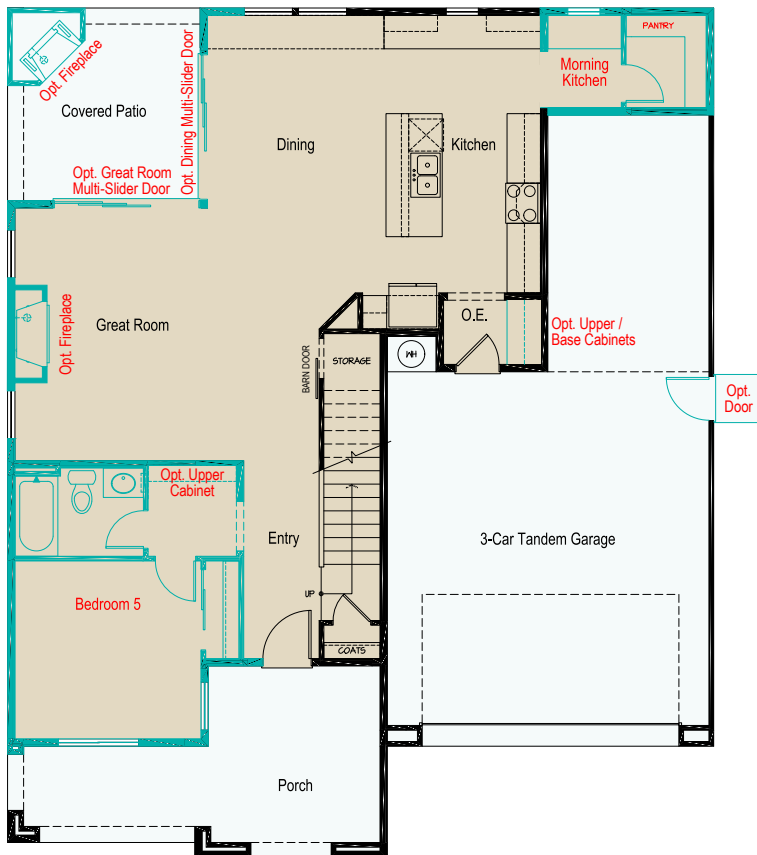


PRAIRIE

## FLOORPLAN OPTIONS:

- Downstairs Bedroom with Closet vs. Den
- Great Room & Kitchen/Dining Multi-Slider
- Outdoor Fireplace
- Owner Entry Valet Cabinetry
- Upstairs Bedroom Addition with Walk-in Closet
- Double Sink Vanity in Upstairs 2nd Bath
- Laundry Room Sink & Cabinetry
- Additional Doors

### LOWER LEVEL



### UPPER LEVEL



Jenuane reserves the right to make changes in price, promotions, material, and home specifications without notice or liability for such changes. Square footage and floorplan representations are approximate. Alternate elevations have minor variations in floorplans and square footage. Renderings are artist's concept. Floorplan may not show all available options. Broker cooperation welcome. Contact the sales agent for details.

